

# History, Planning and Building of the Cedar Gulch and Southern RR



# CG&S Charter

August 31, 1992 the official start of CG&S

- First layout standard H0
- Second Start was Sn3
- Third Layout On3 in Basement Multi Level, two Levels
- Fourth Layout On3 Multi levels, three levels, above the Garage.
- Fifth Layout On3 Multi levels, two levels

## MID-CONTINENT REGION

*Know ye by these presents that the Board of Directors of the Mid-Continent Region does hereby grant this*

## CHARTER

*and shall from this day forth constitute the*

*Cedar Gulch & Southern*

*of the Mid-Continent Region, National Model Railroad Association in*

*Olathe, Kansas*

*with all rights, privileges and obligations of membership as granted by the Board of Directors of the Mid-Continent Region.*

**IN TESTIMONY WHEREOF**

*the Board of Directors has authorized the following signature and the affixing of the seal of the Mid-Continent Region.*



*Larry R. Long* mme  
Signature

*Aug. 31<sup>st</sup>, 1992*  
Date

# CG&S Fourth Layout size of layout 24' x 24' with a 1 ½ turn helix

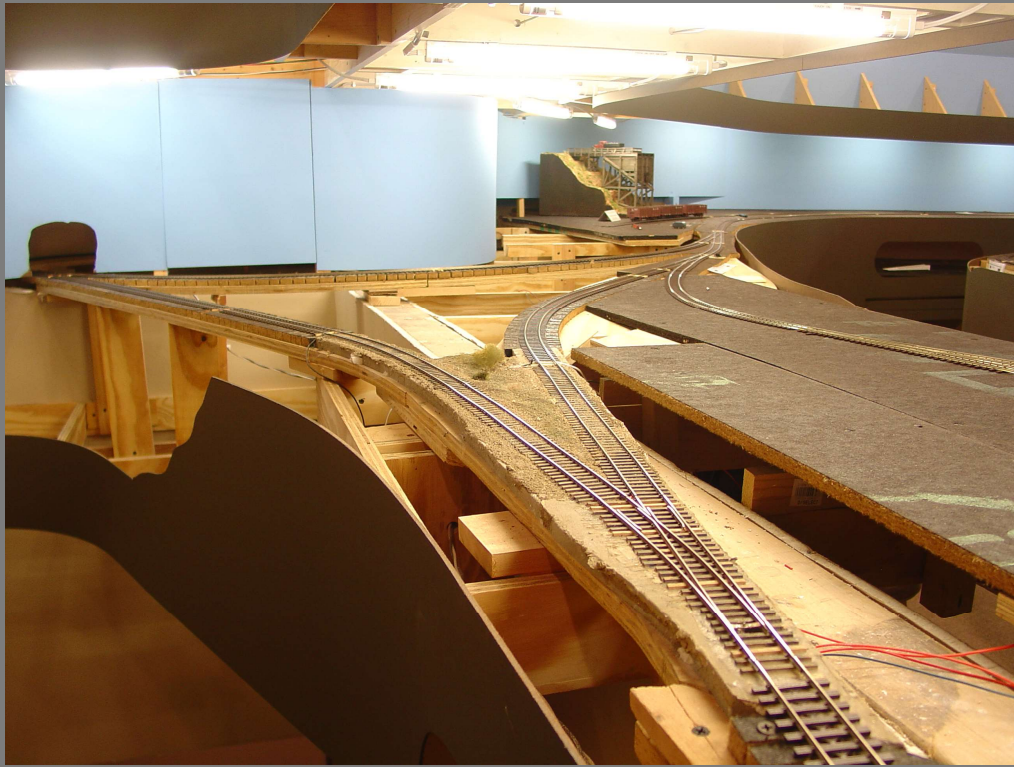


# CG&S Fourth Layout — Upper Level & Swing Gate

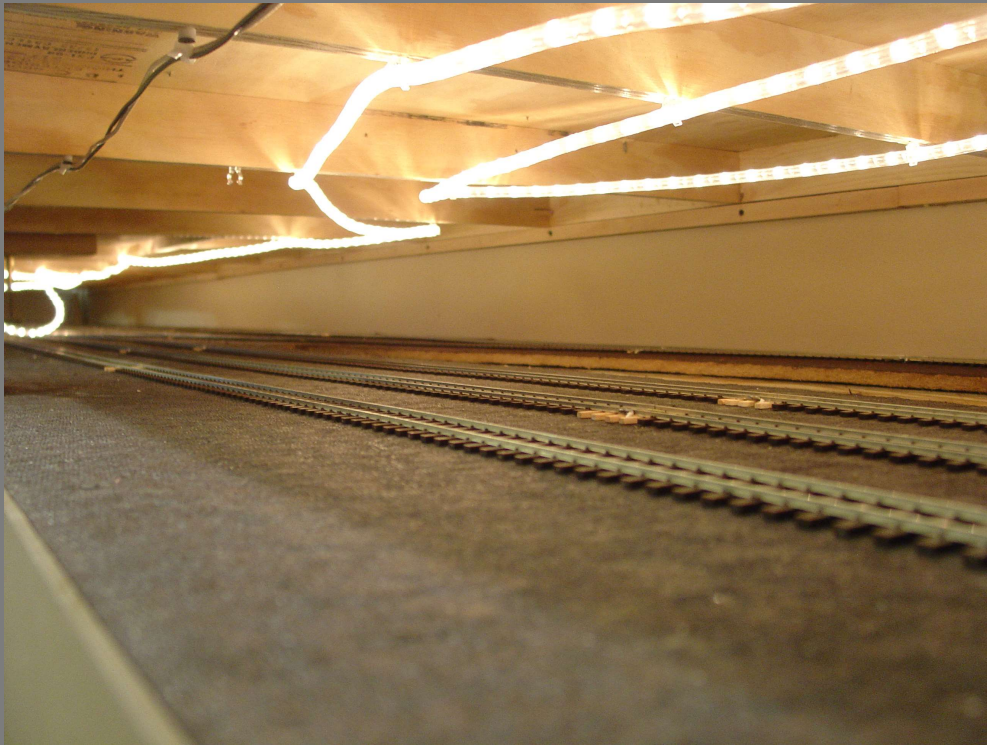


# CG&S Fourth Layout

# The Wye to Durango and Farmington



# CG&S Fourth Layout- Hidden Staging Yard





# Starting the Planning for the Fifth CG&S

## The things wanted in new layout.

- A purpose for the Railroad to exist.
- Want to do Operations for about five operators.
- Heavy on switching
- Industries for traffic based on the southwest Colorado in the 30-40's
- Wanted a mining District, logging with sawmill, livestock transfers, crude oil and passenger trains
- Main Yard Chama NM. With Durango and Farmington in the hidden yard.
- Vertical scenery, bridges/ trestles

## Layout size and Construction Design Spec.

- Have two rooms to work with, One room with finished wall, size 13'-8" x 18'-8" L-shape room with the narrow leg 7'- 8".
- Second room was unfinished basement size 23' x 30' with the furnace and water heater in the center of the room.
- Wanted hang the layout off the walls with no legs where it could be done.
- Masonite backdrops and Vance with curved corners
- Layout height range min 44" max 65", need 20" between first level a second for Chama coaling tower.
- Aisle width of min of 30" preferred 36" +



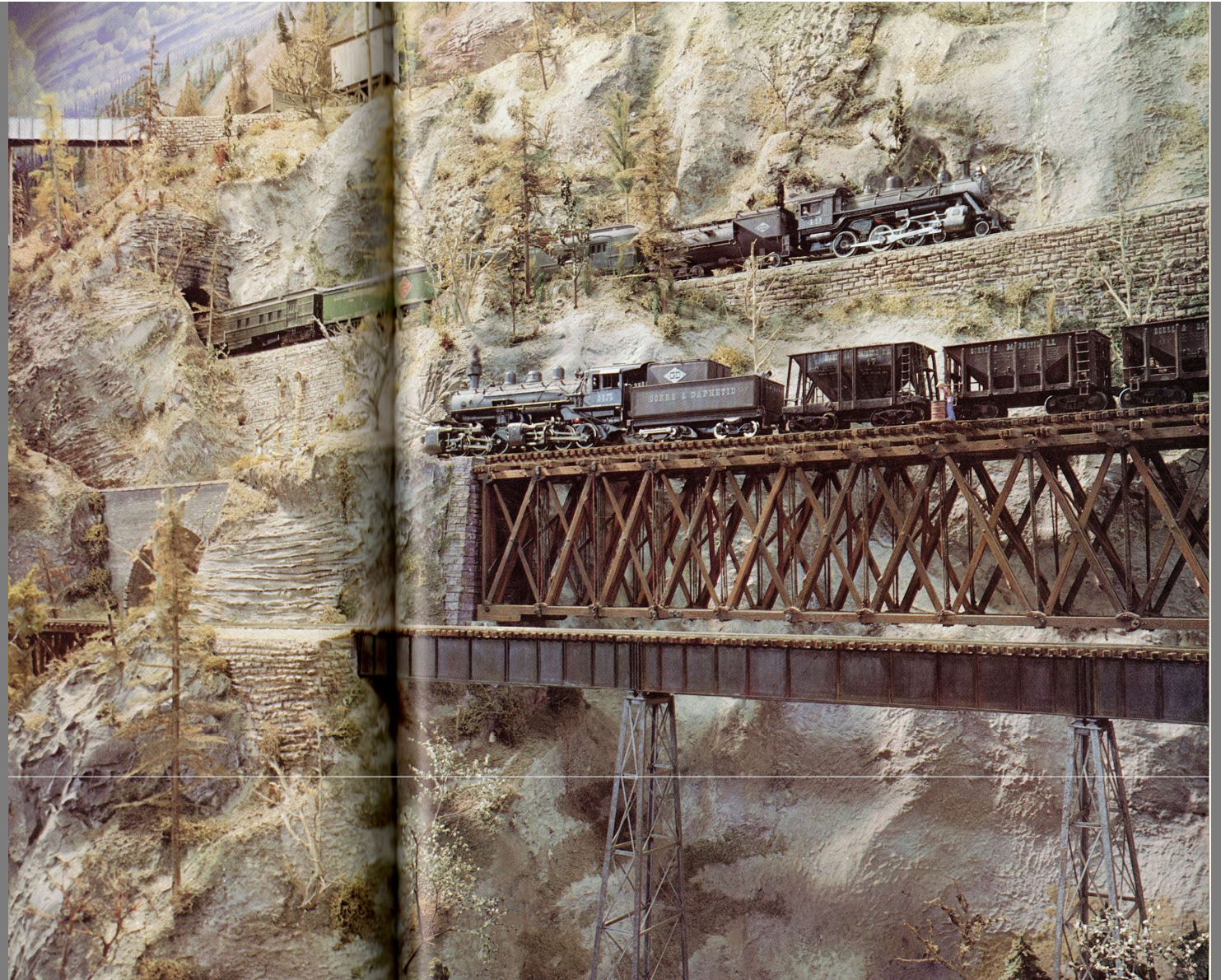
## Layout size and Construction Design Spec.

- Try not to have duck under
- Code 100 San Juan Flex track with numbers 6 switches
- Would like to use 42" radius on main line
- Bench work to be open grid and L-shape from last layout
- Curve templates for 36", 38", 40", 42", 44" and 48", foam cord design and Fast Track
- Use the  $\frac{3}{4}$ " plywood for yard and track support
- Fiber broad  $\frac{1}{2}$ " for the sub roadbed
- For scenery design card broad, plaster cloth and casted plaster
- Cover the ceiling to keep dust from upstairs falling out the layout.
- Support the second level

## Layout size and Construction Design Spec.

- Grades on Layout – max of 3%
- Max Train length – Seven Car, which with Engine and Caboose would be Approx. 10 Feet. Design Siding to handle the size train.
- Layout Control – DCC NCE System, Wireless Throttles. 12 gauge Main Buss and 12 gauge Accessory Buss, 18 gauge Track Power Drops, Use 3M Clips and Wago Lever-Nuts for connectors.
- Switch controls – Hand Throw for Switches that can be reached easy, Tortoise for the rest.

John Allen's  
Gorre & Daphetid  
HO Layout



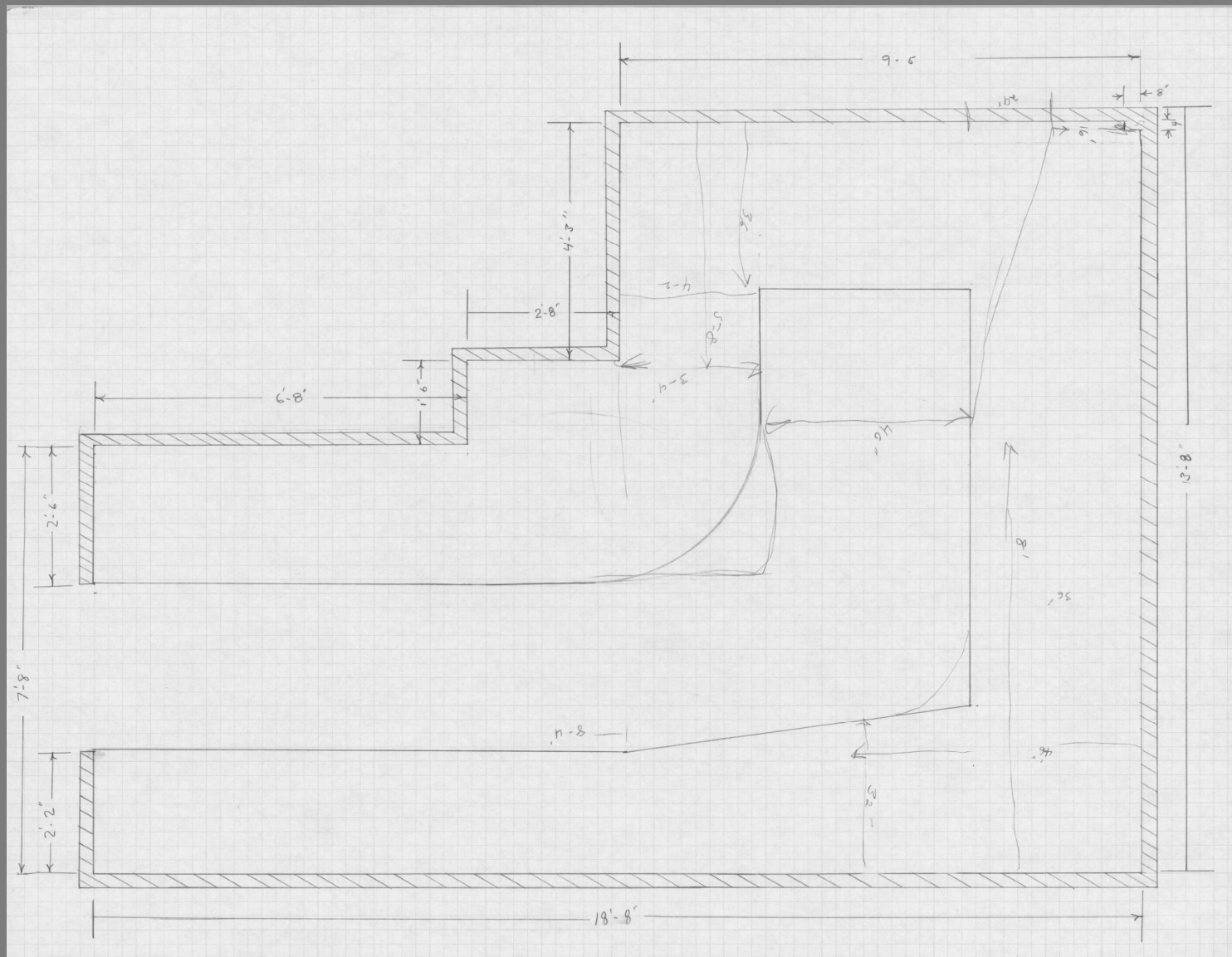




## Start of Construction on the CG&S

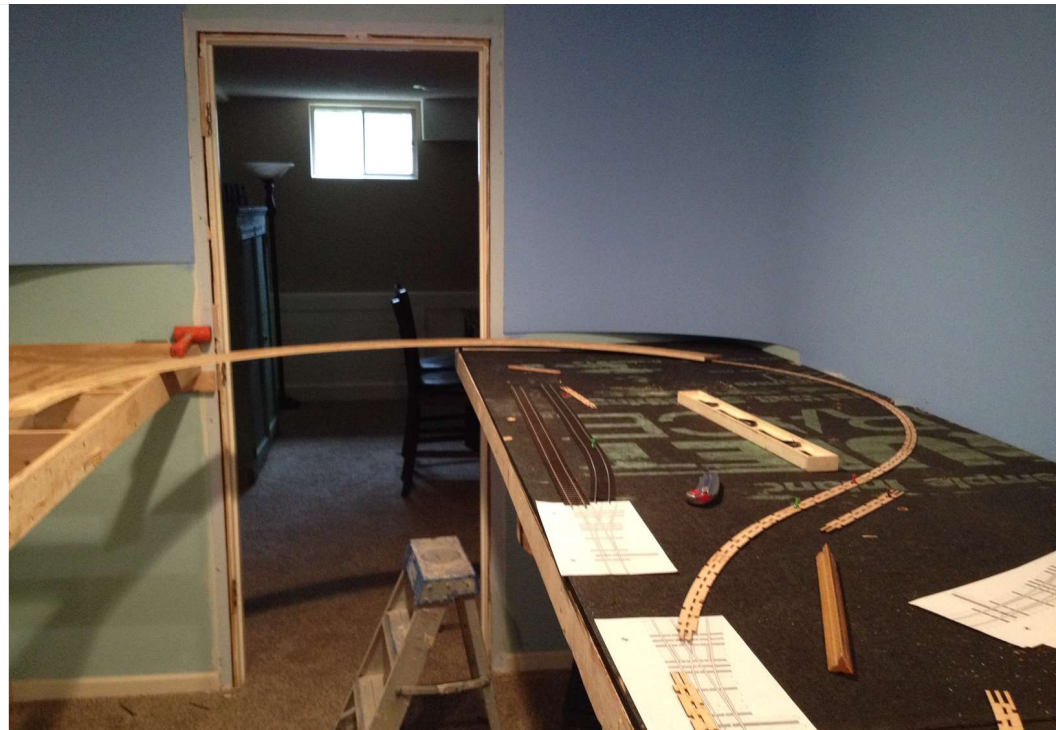
**This is the Como Round house when I opened the box a year after the move.**

# Mining District First Room Drawing



# Bench Work that supports the Layout off the wall



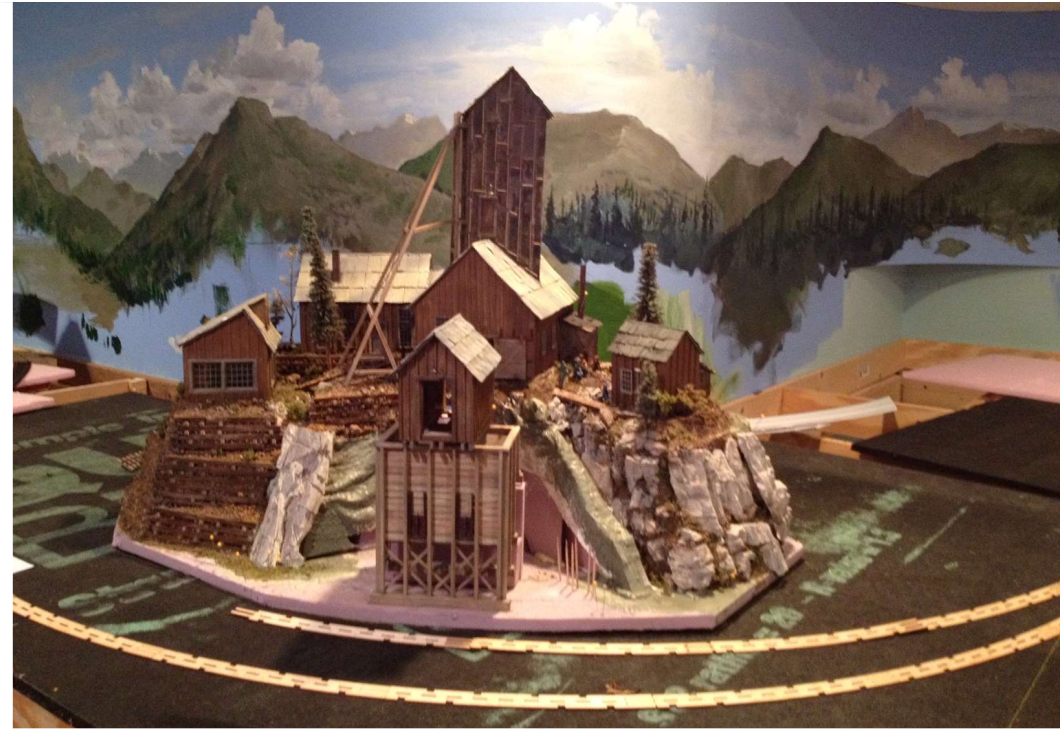


Start of the Mining District



# Expanding Into the Main room





- The Larry's Affect — Larry Patch Backdrop was done with acrylic paint, 2" bush, spray bottle, paper towels and a wet sponge & Larry Diehl - LD#1 & LD#2 Mines



**The Opposite Side of the Room from LD Mines**



**Looking at the old door Entance**



Cedar Gulch Yard and Turn Table

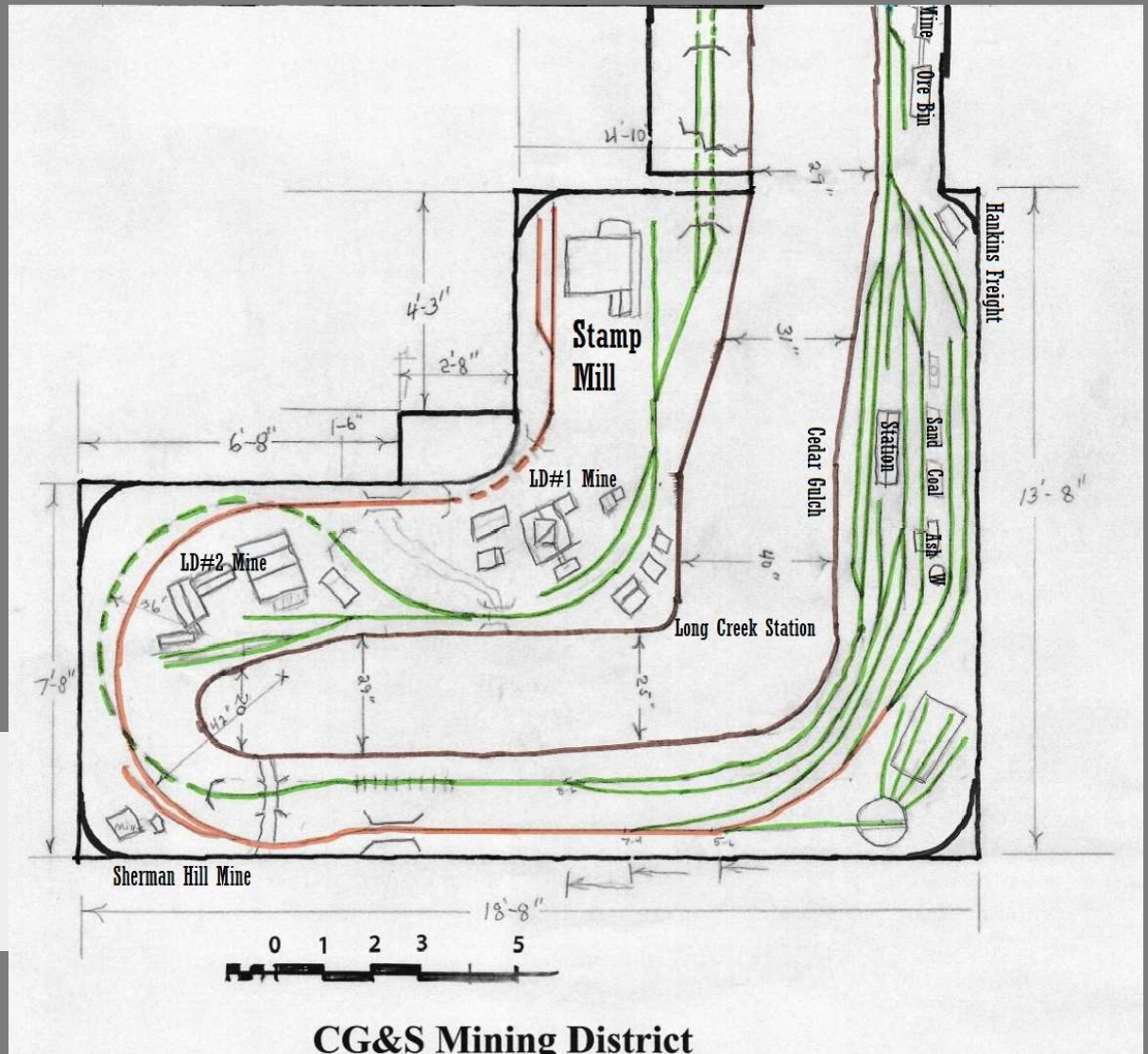


Heading Into the main room



# Mining District As Built

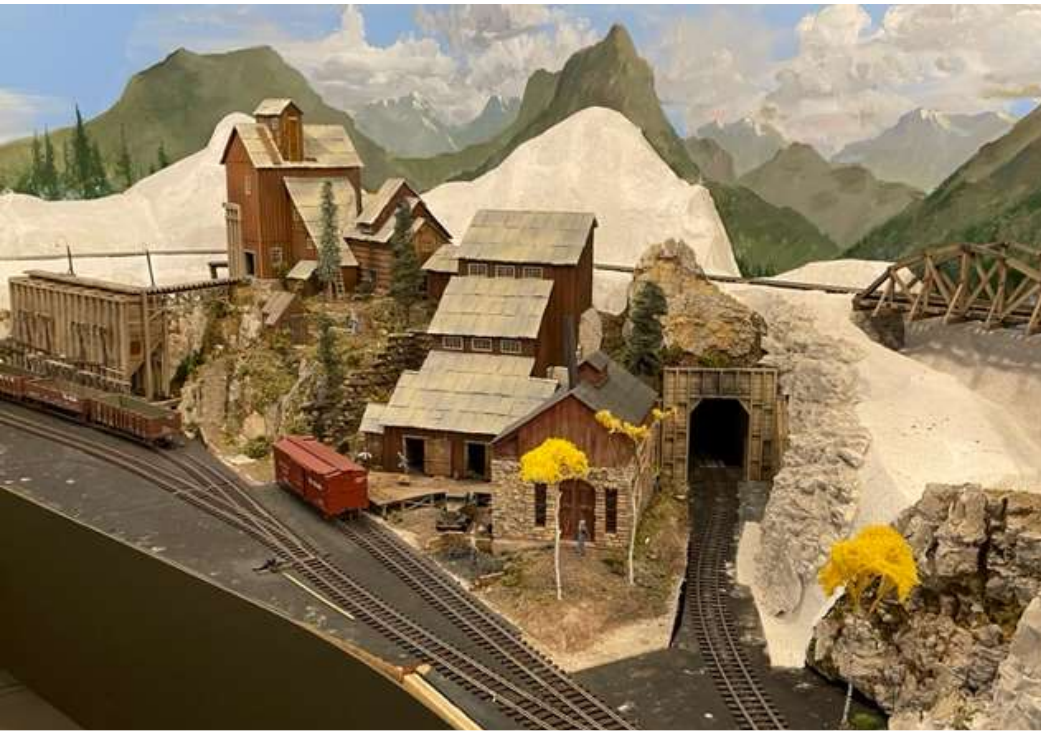
-  Mining District, Cedar Gulch, Stanley Mine
-  Branch Line up to Stamp Mill





Tall Trestle and LD #1 & #2 Mines to Date



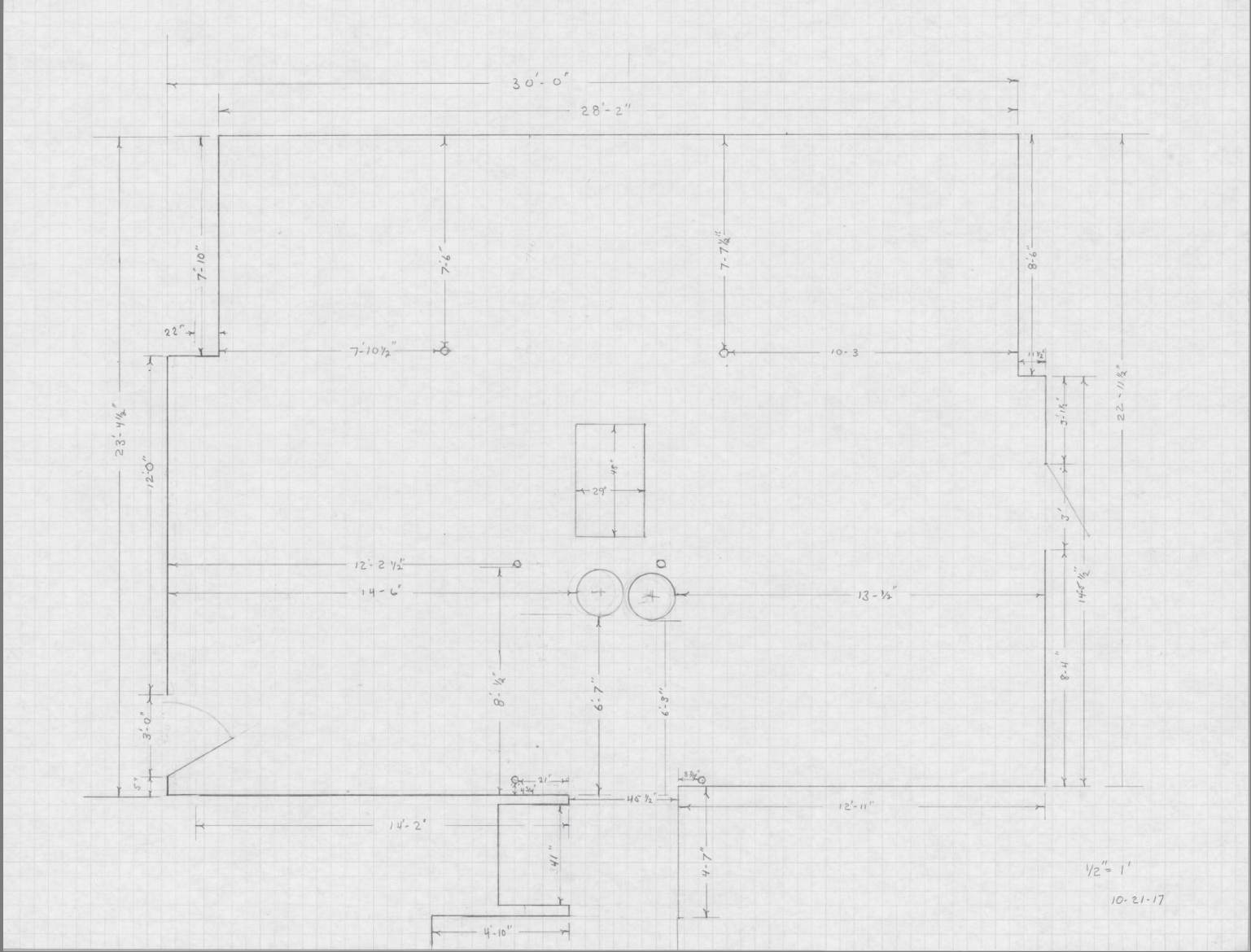


**LD #2 Mine and Future Site for the  
Next Mine Heading Into Main Room**



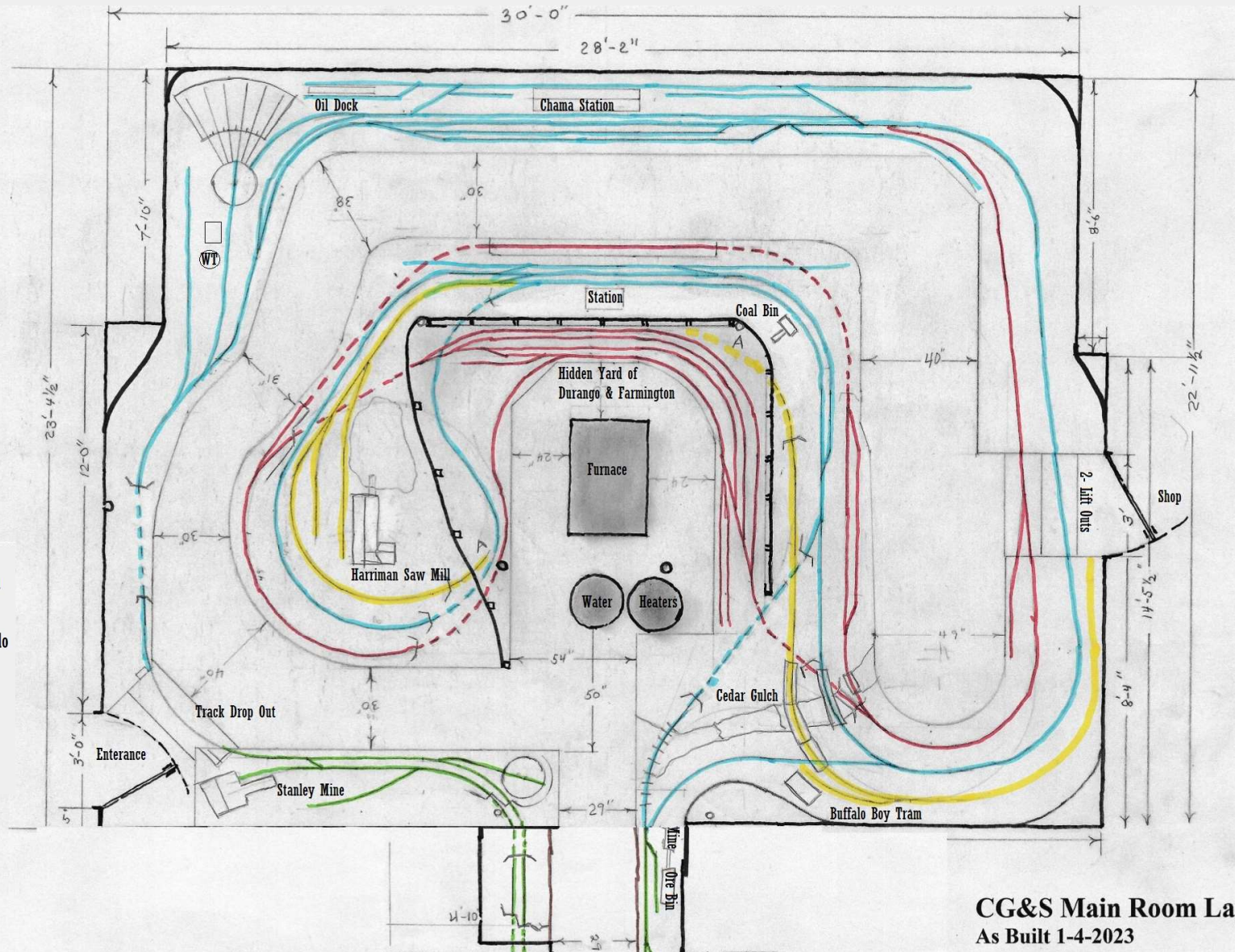
Pano of the CG&S Mining District

# Main Room Drawing



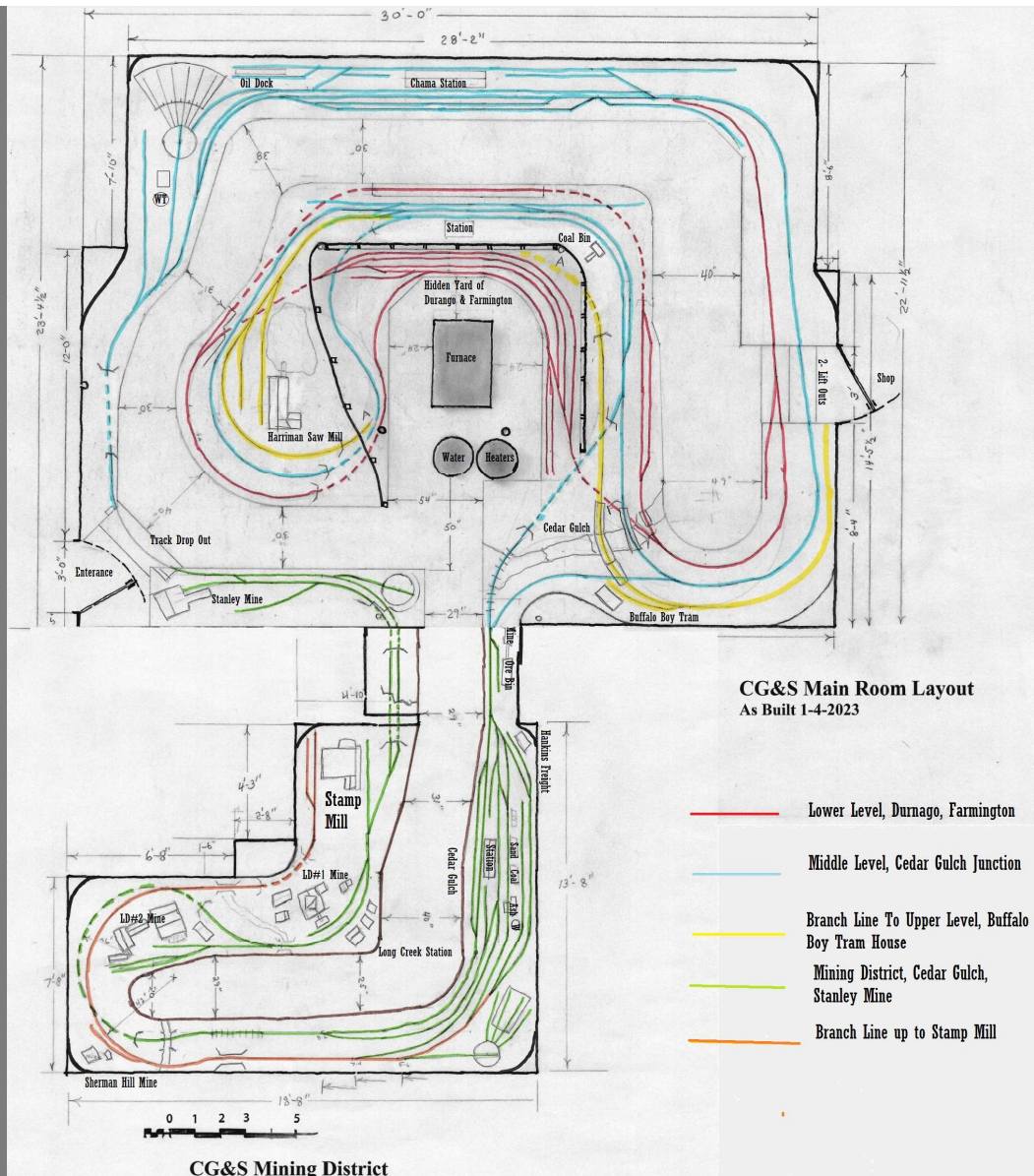
# CG&S Main Room

- Lower Level, Durnago, Farmington
- Middle Level, Cedar Gulch Junction
- Branch Line To Upper Level, Buffalo Boy Tram House
- Mining District, Cedar Gulch, Stanley Mine
- Branch Line up to Stamp Mill

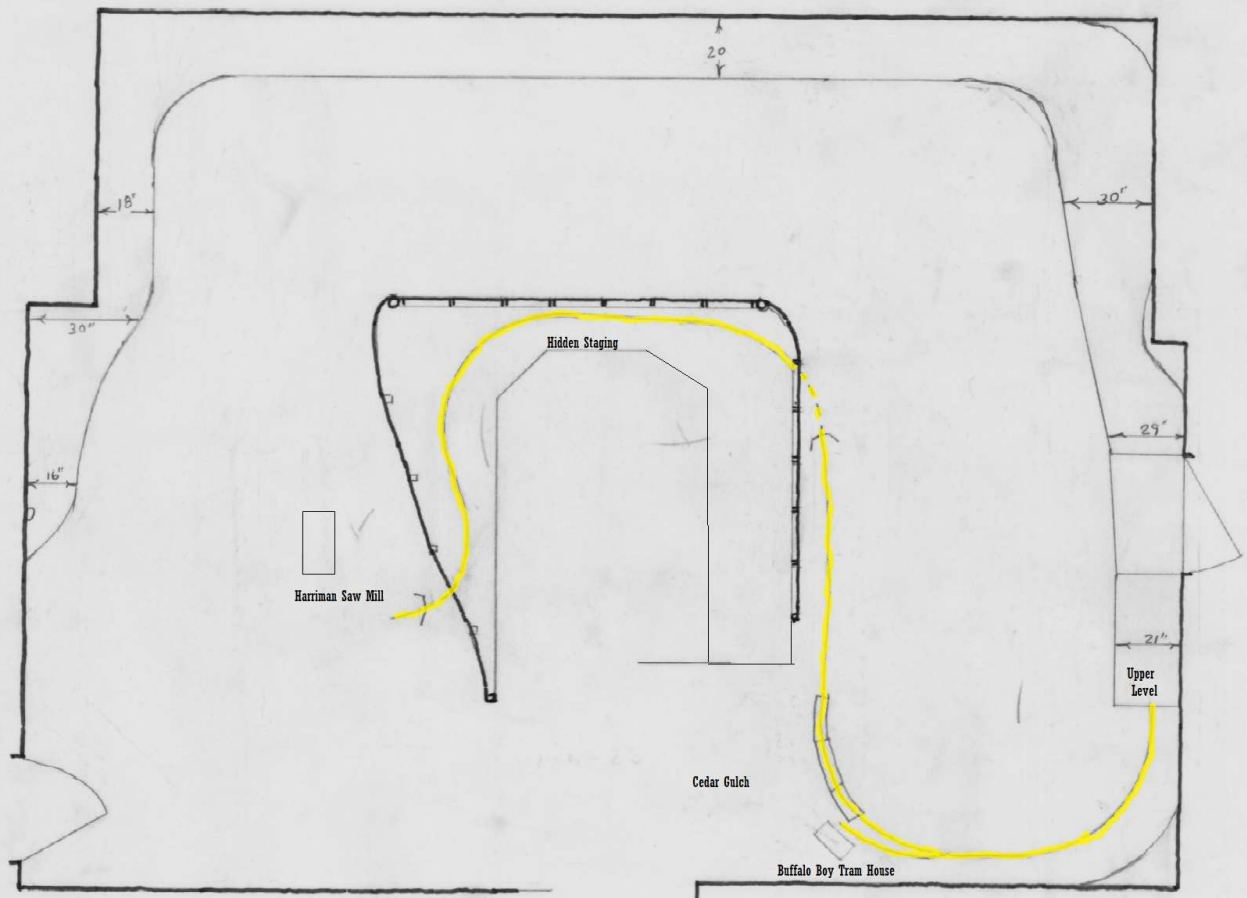


**CG&S Main Room Layout**  
As Built 1-4-2023

# CG&S Main Room Plus Mining District

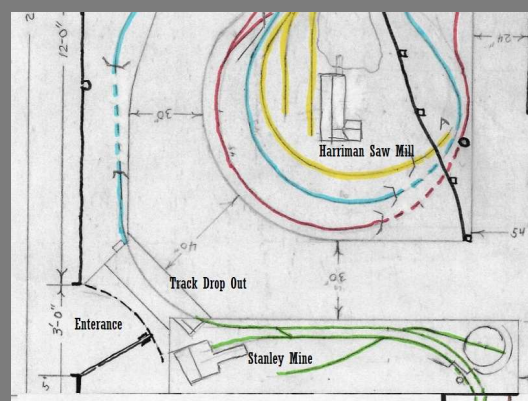
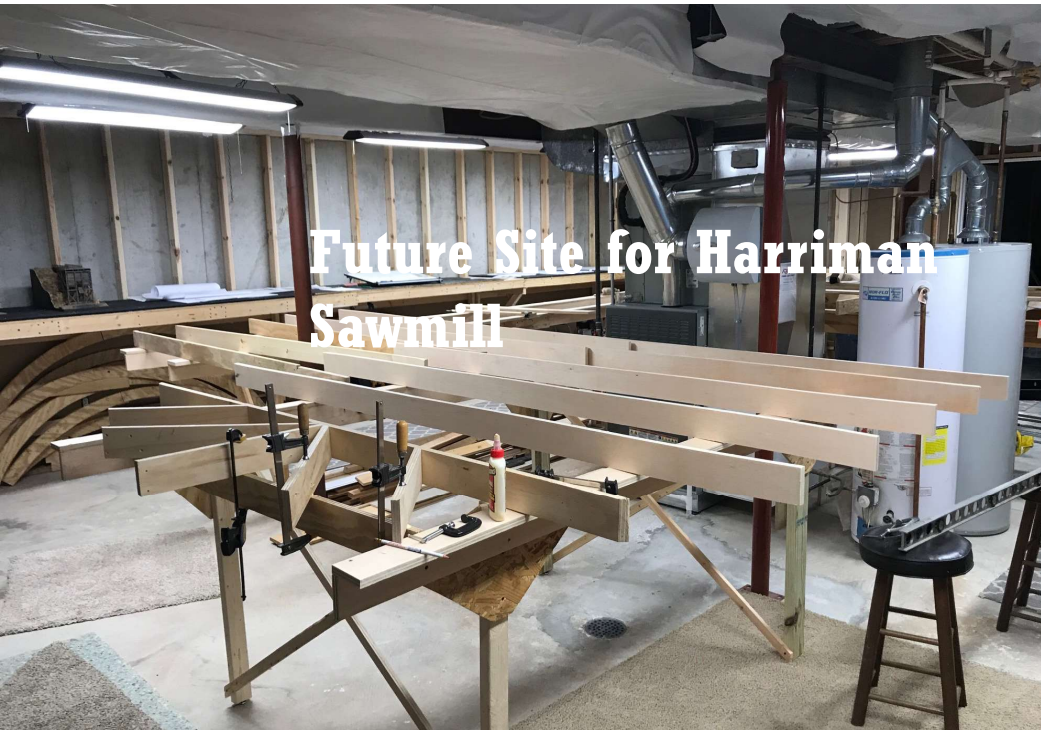


# Main Room Upper Level Branch Line



## CG&S Upper Level

— Branch Line to  
Upper Level,  
Buffalo Boy  
Tram House



Starting the Bench Work In the Main Room  
Looking From the Layout Room Door



**Chama Yard Bench Work  
and the Start of Cedar Gulch Bench work**



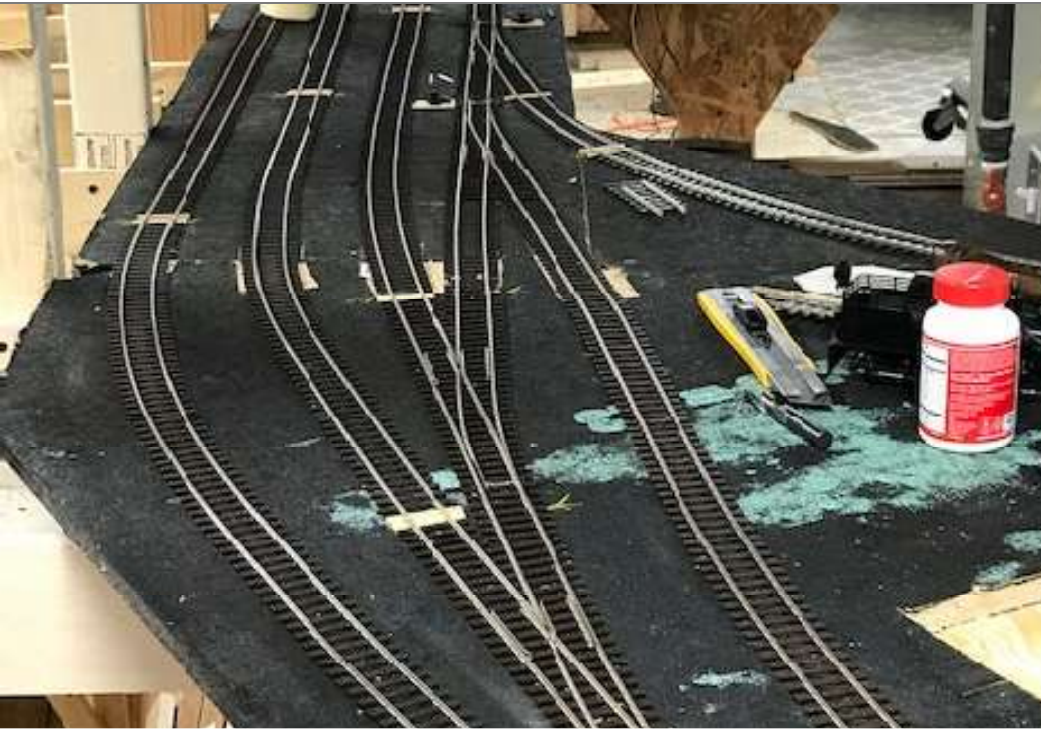


- Upper level supported by 1" x 6" cut to shape anchored to wall studs Above the Chama Yard

Looking Though the Cedar Gulch Bench Work



Track Work On the Center Section Lower Level



Durango and Farmington Hidden Yard Lower Level



Track into Hidden Yard and Reverse Loop



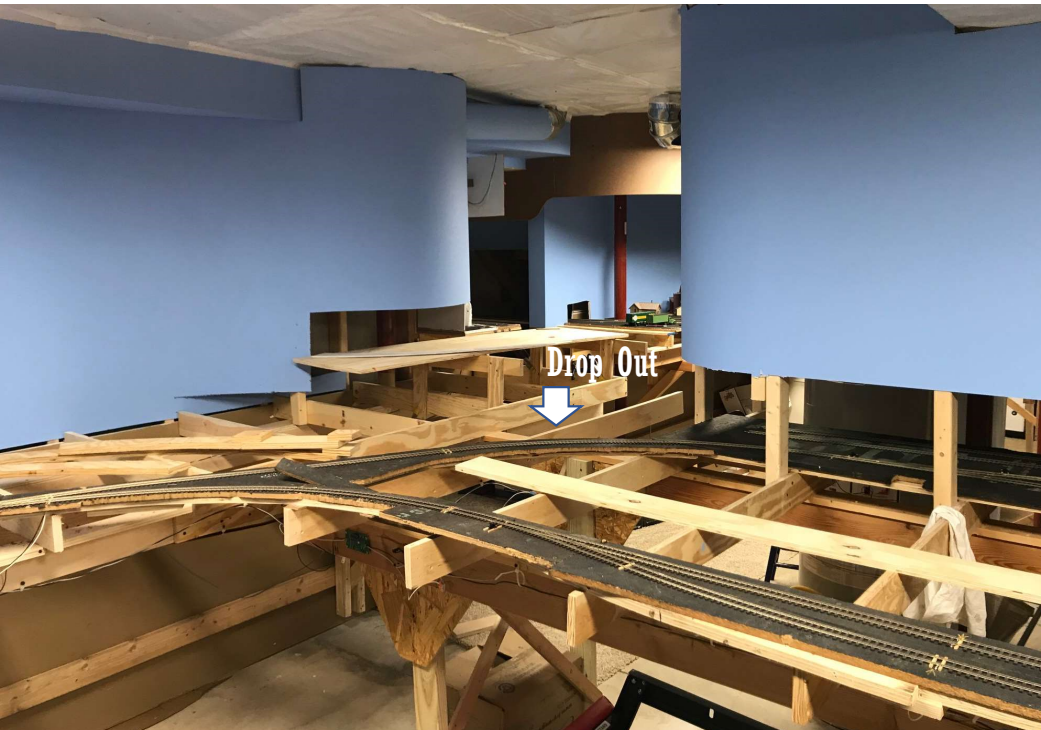
Building the Branch Line to  
the Upper Level Around Saw Site



Diehl-McKee Affect- Before Picture on the Left and on the Right We Have a reverse Loop



Harriman Saw Site with Backdrop



Starting Cedar Gulch Track supports





# Cedar Gulch Wye Support



Cedar Gulch Track Being Laid



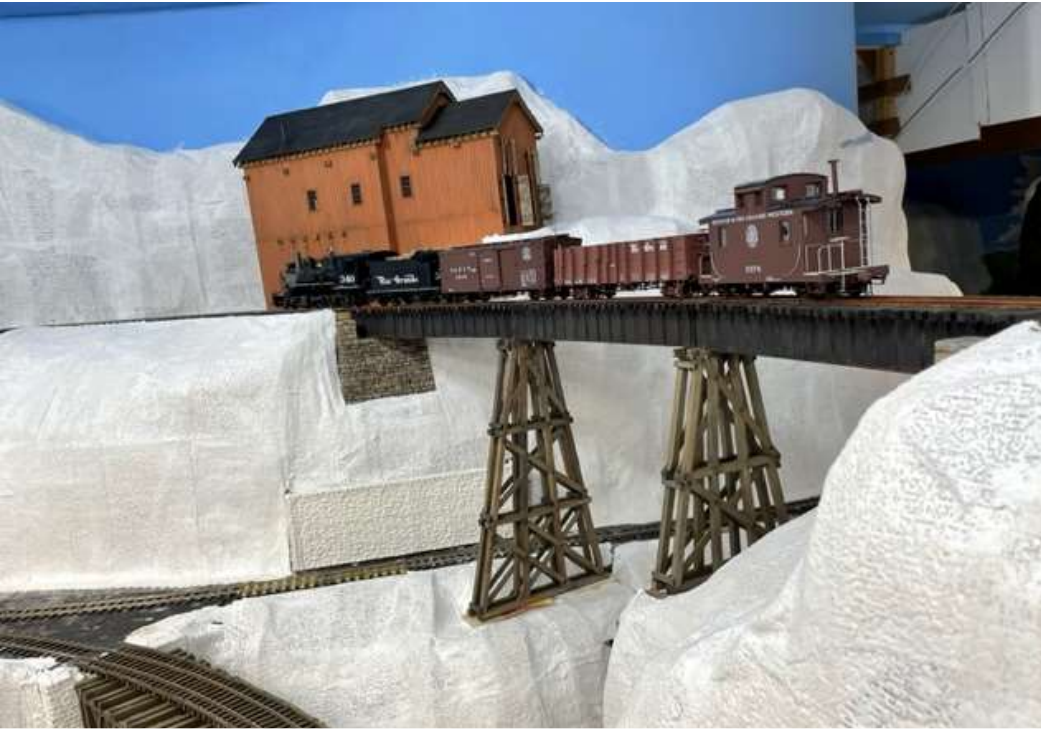
Ore Bin In Place and the Start of All the Bridges



# Landscaping of Cedar Gulch & Tunnel In Place



Roughing in Landscape bridges side



# Plaster Cloth and Rock Casting of Cedar Gulch



Checking Rock Casting Clearances — Very Close



# Raw Rock Work





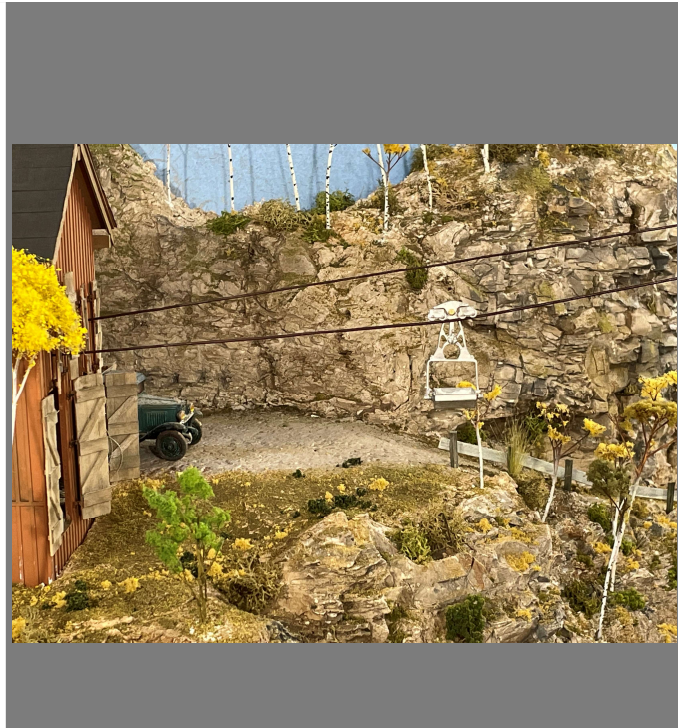
Start of the Coloring Process



# Rock & Bridge Work



# Rock Coloring Process



# Buffalo Boy Tram House



# Cedar Gulch As Is



# Turntable and Stanley Mine



# Harriman Saw Mill Site Under Constuction







Entrance to Shop Lift Outs



**Second Lift Out In Place  
a Third Lift Out in the back will be made of  
foam to Match Scenery in the Future**

## Lift Outs

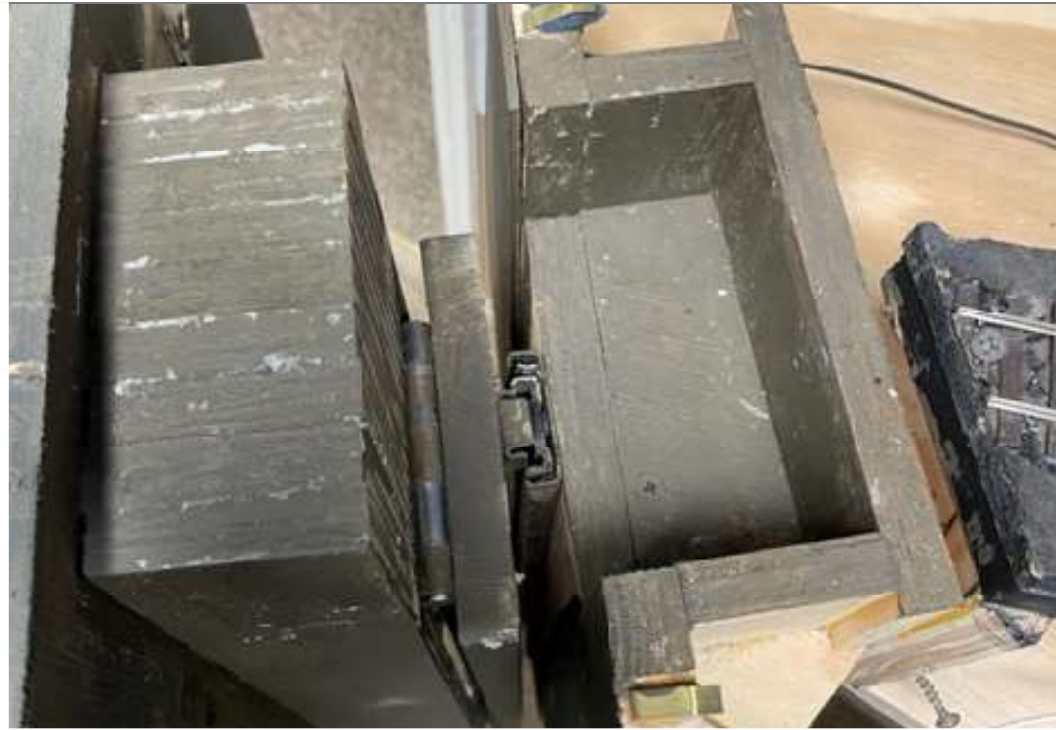
- I Made a Place to Storge the Lift Outs When Not In Use, Just to the Left Of the Entrance of the Shop



# CG&S Entrance



- This Drop Entrance was made by using a Drawer Glide and hinge.
- Strips of Plywood with spacer to support the track across the entrance



# Pockets for the Track Support



**View Of the Drop In Place**

